



88 references
30 designs
4 bevelled edges

Creation Zen

The new generation
of acoustic Luxury Vinyl Tile

Gerflor[®]



Contents

- 04. Creation Zen**
The new generation of acoustic Luxury Vinyl Tile
- 05. The collection for low and high traffic areas**
- 06-07. High acoustic performance & comfort**
- 08. Creation Zen colour palette**
- 09-18. Design & colors**
- 19. Tiles & planks dimensions, NCS & LRV values & finishes**
- 20-21. Mix & Match**
- 22. Technical datas**

Find out more
gerflor.com

Find us on social media:





An overwhelming sense of well-being...

A wave of peace and harmony fills the room... Listen to the sounds vanish underfoot, feel the surprising lightness of the tiles and planks, the flooring is installed in a heartbeat... a sigh of relief for the planet.

Zen Creation is Gerflor's new range of acoustic LVTs and was designed (by our teams) to put customers, communities, and the environment first, in line with our mission:

we care / we act
Our Commitments for a Sustainable future

The collection for low & high traffic areas

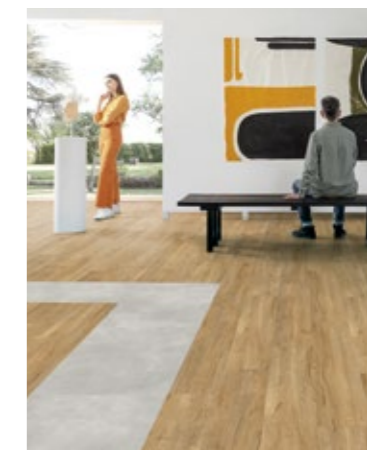
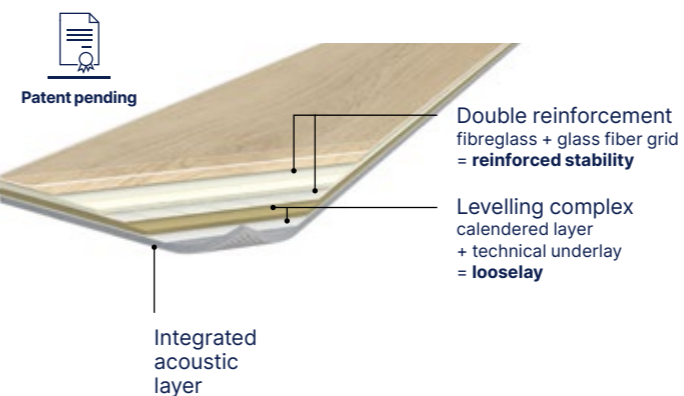
Creation 40 Zen

- An **aesthetic & economical solution** for homes
- ✓ Integrated acoustic layer : **20 dB**



Creation 55 Zen Creation 70 Zen

- An exclusive, **eco-designed** solution for **quick installation** in high-traffic locations
- ✓ **Made from at least 15% recycled**
- ✓ 2 reinforcements = improved stability
- ✓ Integrated acoustic layer : **20 dB**



Creation Zen

22
CORE
DESIGNS

Core Designs

- 22 designs for low to high traffic areas



New designs

- 4 bevelled edges
- Available in 3 sizes
- MyCreation Zen custom designs available



New surface treatment

- Extra-matt appearance
- Micro-scratch-resistant
- Easy maintenance



The whole picture

- S0001 skirting board matches your floor or in plain white to paint and match other design elements in the room



Tackifier or glue-down loose lay installation



NATURE OAK TAUPE

**MADE
& RECYCLED
IN FRANCE**

High acoustic performance & comfort



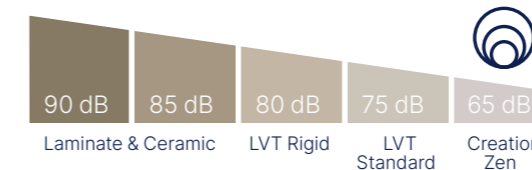
Zen for the planet

- Made in France
- Recycled content and 100% recyclable
- Lowest carbon footprint of all loose lay LVTs
- Phthalate-free*



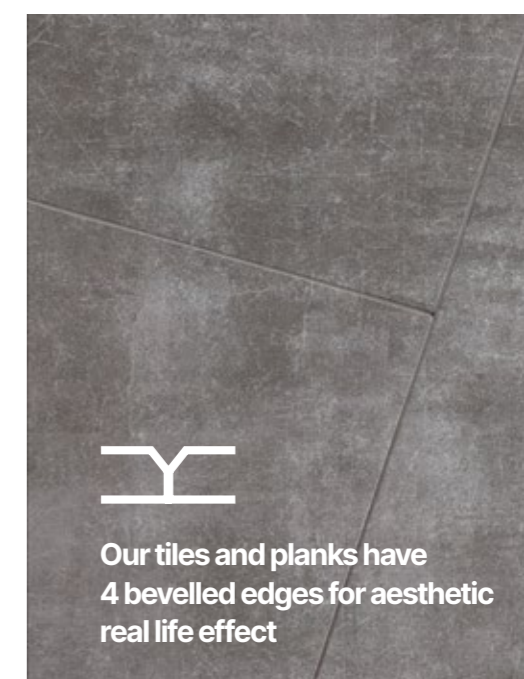
Zen for the user

- Protecshield™ surface treatment, microscratch-resistant and easy to clean
- Acoustic insulation: 20 dB
- Better impact sound absorption: 65 dB



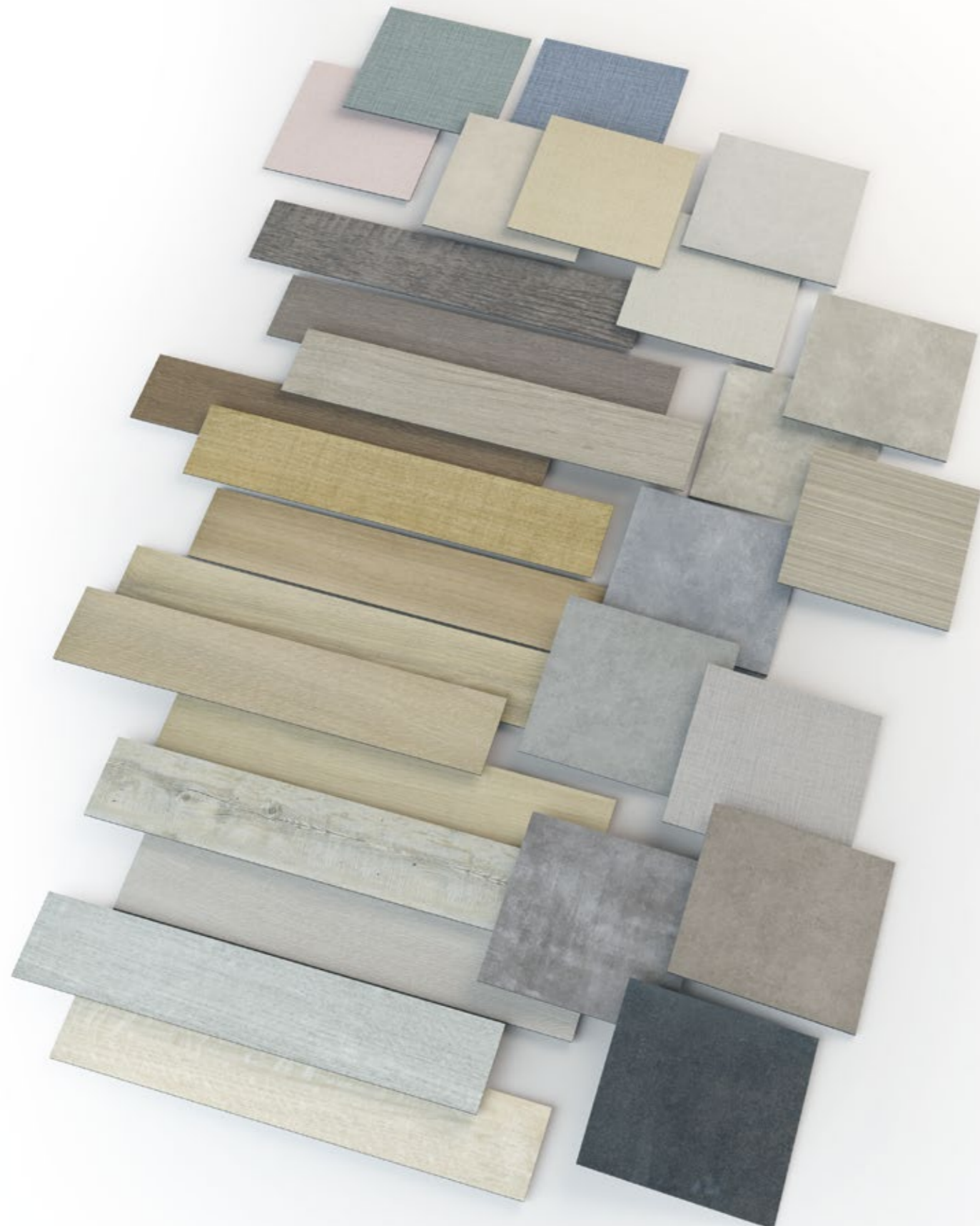
Zen for the installer

- Loose lay installation on to tackifier
- Flexible and lightweight to make cutting easier
- Replaceable: quick installation and removal



* Excluding recycled content
** Creation 55 Zen / Creation 70 Zen

Creation Zen colour palette



Bostonian Oak

245 x 1250



Bostonian Oak Dark 1421
C40 Zen | C55 Zen | C70 Zen



Bostonian Oak Medium 1422
C40 Zen | C55 Zen | C70 Zen



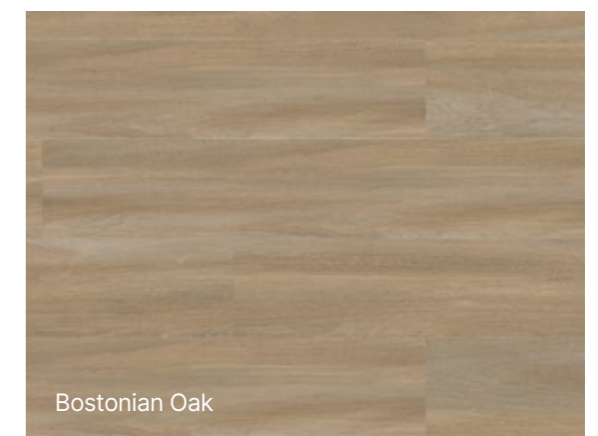
Bostonian Oak 1415
C40 Zen | C55 Zen | C70 Zen



Bostonian Oak Kraft 1478
C40 Zen | C55 Zen | C70 Zen



Bostonian Oak Beige 1416
C40 Zen | C55 Zen | C70 Zen



Bostonian Oak

DESIGN SHADE VARIATION :  Light  Medium  High

Nature Oak

245 × 1250



Nature Oak Taupe



Nature Oak Taupe 1481
C40 Zen | C55 Zen | C70 Zen



Nature Oak Honey 1480
C40 Zen | C55 Zen | C70 Zen



Nature Oak Kraft 1479
C40 Zen | C55 Zen | C70 Zen



Nature Oak Taupe

Nature Oak

150 × 750



Nature Oak Kraft



Nature Oak Taupe 1481
C40 Zen | C55 Zen | C70 Zen



Nature Oak Kraft 1479
C40 Zen | C55 Zen | C70 Zen



Nature Oak Kraft

Swiss Oak

245 × 1250



Swiss Oak Pearl 1420
C40 Zen C55 Zen C70 Zen



Swiss Oak Golden 1419
C40 Zen C55 Zen C70 Zen



Swiss Oak Beige 1418
C40 Zen C55 Zen C70 Zen



Swiss Oak Beige

Ranch

245 × 1250



Ranch 0773
C40 Zen C55 Zen C70 Zen



Ranch Anthracite 0953
C40 Zen C55 Zen C70 Zen



Ranch

Twist

245 x 1250



Twist



Twist 1417
C40 Zen C55 Zen C70 Zen



Twist

Cocoon Metal

500 x 500



Cocoon Metal



Cocoon Metal 0817
C55 Zen C70 Zen



Cocoon Metal

Bloom Uni

◇ 500 × 500



Bloom Uni Taupe

   <p>Bloom Uni Black 1483 C55 Zen C70 Zen</p>	   <p>Bloom Uni Souris 1485 C40 Zen C55 Zen C70 Zen</p>
   <p>Bloom Uni Brown 1484 C55 Zen C70 Zen</p>	   <p>Bloom Uni Clear 1482 C55 Zen C70 Zen</p>
   <p>Bloom Uni Taupe 1412 C40 Zen C55 Zen C70 Zen</p>	   <p>Bloom Uni Grey 1413 C40 Zen C55 Zen C70 Zen</p>
   <p>Bloom Uni Perle 0963 C40 Zen C55 Zen C70 Zen</p>	









Bloom Uni Taupe


Parker

◇ 500 × 500



Parker Station

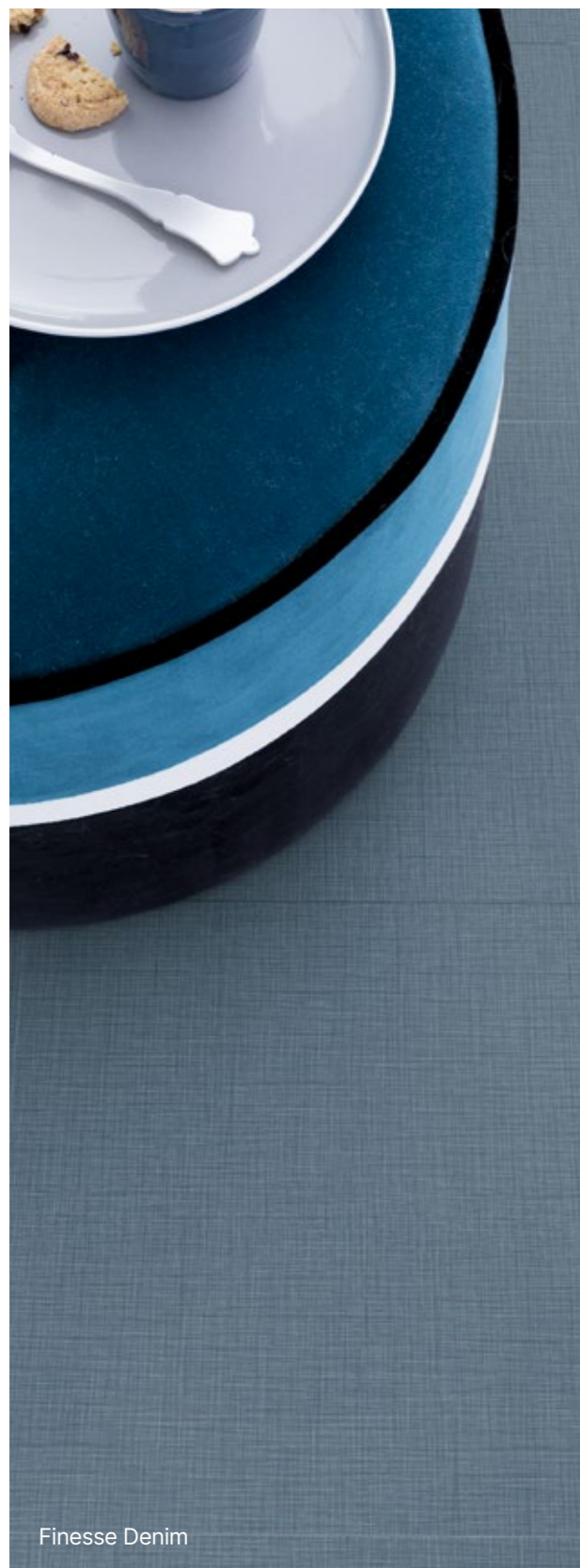
   <p>Parker Station 1414 C40 Zen C55 Zen C70 Zen</p>	   <p>Parker Clear 1486 C40 Zen C55 Zen C70 Zen</p>
--	--



Parker Station

Finesse

◇ 500 x 500



Finesse Denim 1488
C55 Zen C70 Zen

Finesse Grey 1489
C40 Zen C55 Zen C70 Zen



Finesse Brown 1063
C40 Zen C55 Zen C70 Zen

Finesse Nature 1064
C55 Zen C70 Zen

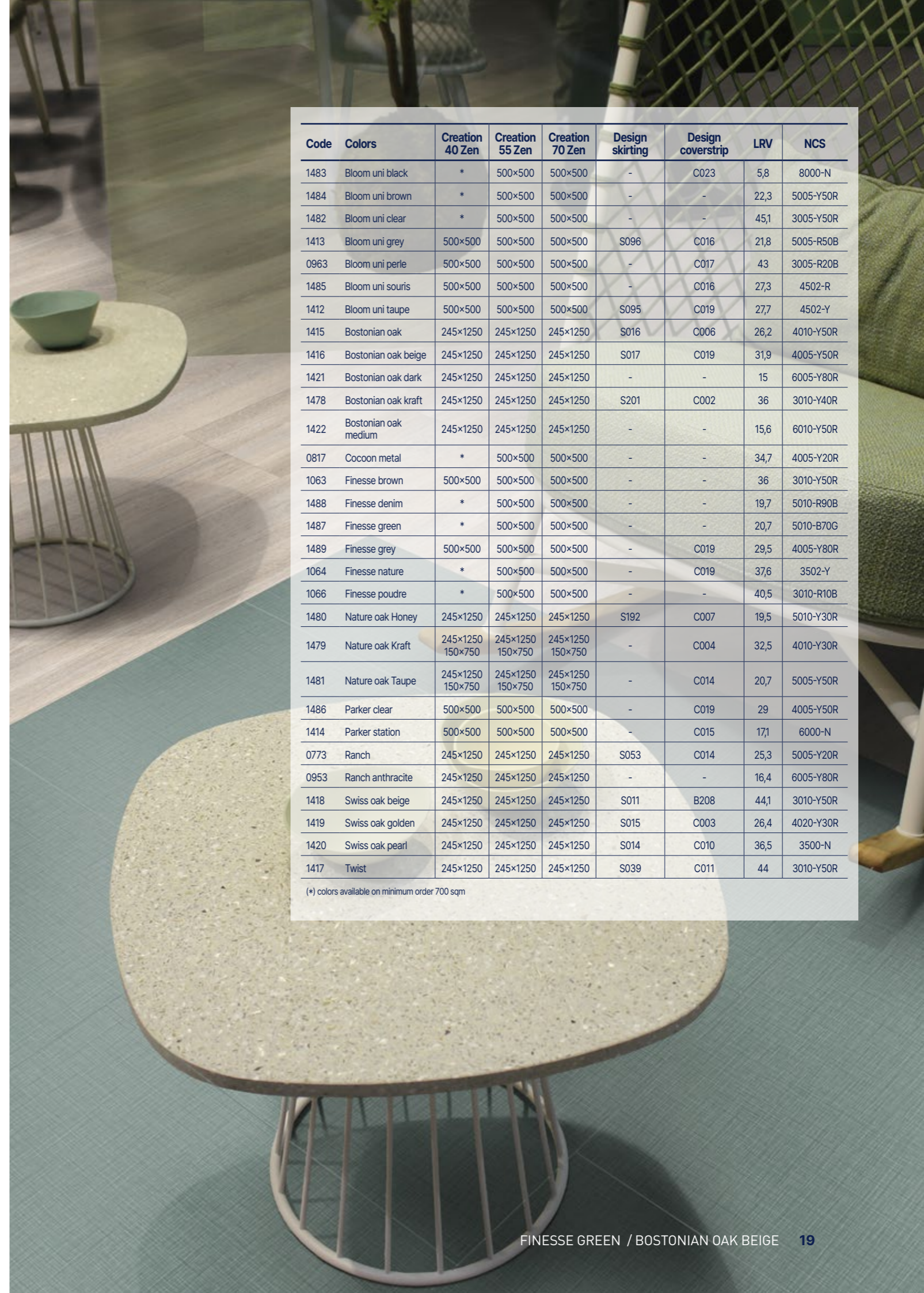


Finesse Poudre 1066
C55 Zen C70 Zen

Finesse Green 1487
C55 Zen C70 Zen



Finesse Nature



Code	Colors	Creation 40 Zen	Creation 55 Zen	Creation 70 Zen	Design skirting	Design coverstrip	LRV	NCS
1483	Bloom uni black	*	500x500	500x500	-	C023	5,8	8000-N
1484	Bloom uni brown	*	500x500	500x500	-	-	22,3	5005-Y50R
1482	Bloom uni clear	*	500x500	500x500	-	-	45,1	3005-Y50R
1413	Bloom uni grey	500x500	500x500	500x500	S096	C016	21,8	5005-R50B
0963	Bloom uni perle	500x500	500x500	500x500	-	C017	43	3005-R20B
1485	Bloom uni souris	500x500	500x500	500x500	-	C016	27,3	4502-R
1412	Bloom uni taupe	500x500	500x500	500x500	S095	C019	27,7	4502-Y
1415	Bostonian oak	245x1250	245x1250	245x1250	S016	C006	26,2	4010-Y50R
1416	Bostonian oak beige	245x1250	245x1250	245x1250	S017	C019	31,9	4005-Y50R
1421	Bostonian oak dark	245x1250	245x1250	245x1250	-	-	15	6005-Y80R
1478	Bostonian oak kraft	245x1250	245x1250	245x1250	S201	C002	36	3010-Y40R
1422	Bostonian oak medium	245x1250	245x1250	245x1250	-	-	15,6	6010-Y50R
0817	Cocoon metal	*	500x500	500x500	-	-	34,7	4005-Y20R
1063	Finesse brown	500x500	500x500	500x500	-	-	36	3010-Y50R
1488	Finesse denim	*	500x500	500x500	-	-	19,7	5010-R90B
1487	Finesse green	*	500x500	500x500	-	-	20,7	5010-B70G
1489	Finesse grey	500x500	500x500	500x500	-	C019	29,5	4005-Y80R
1064	Finesse nature	*	500x500	500x500	-	C019	37,6	3502-Y
1066	Finesse poudre	*	500x500	500x500	-	-	40,5	3010-R10B
1480	Nature oak Honey	245x1250	245x1250	245x1250	S192	C007	19,5	5010-Y30R
1479	Nature oak Kraft	245x1250 150x750	245x1250 150x750	245x1250 150x750	-	C004	32,5	4010-Y30R
1481	Nature oak Taupe	245x1250 150x750	245x1250 150x750	245x1250 150x750	-	C014	20,7	5005-Y50R
1486	Parker clear	500x500	500x500	500x500	-	C019	29	4005-Y50R
1414	Parker station	500x500	500x500	500x500	-	C015	17,1	6000-N
0773	Ranch	245x1250	245x1250	245x1250	S053	C014	25,3	5005-Y20R
0953	Ranch anthracite	245x1250	245x1250	245x1250	-	-	16,4	6005-Y80R
1418	Swiss oak beige	245x1250	245x1250	245x1250	S011	B208	44,1	3010-Y50R
1419	Swiss oak golden	245x1250	245x1250	245x1250	S015	C003	26,4	4020-Y30R
1420	Swiss oak pearl	245x1250	245x1250	245x1250	S014	C010	36,5	3500-N
1417	Twist	245x1250	245x1250	245x1250	S039	C011	44	3010-Y50R

(* colors available on minimum order 700 sqm)

Mix & Match



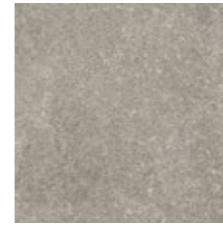
Parker Station / Ranch Anthracite



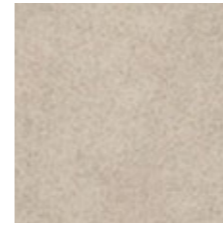
Parker Station



Ranch Anthracite



Bloom Uni Taupe



Bloom Uni Clear



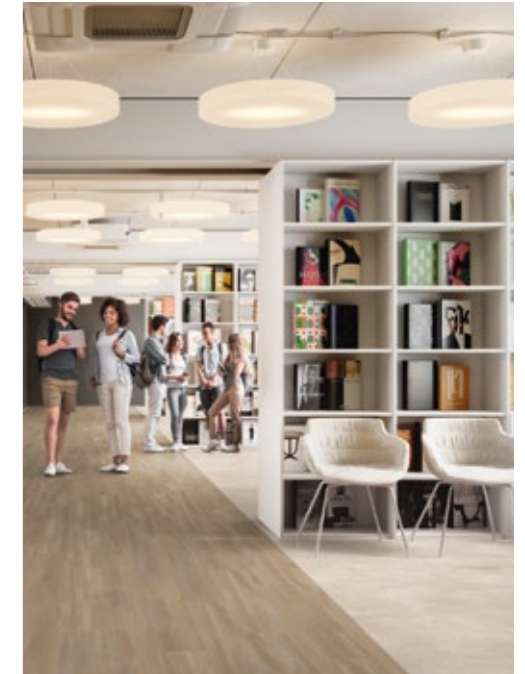
Bloom Uni Taupe / Bloom Uni Clear



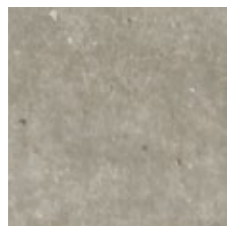
Bostonian Oak



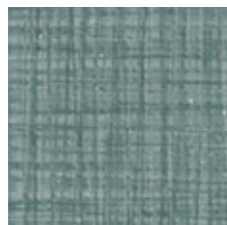
Bloom Uni Clear



Bostonian Oak / Bloom Uni Clear



Parker Clear



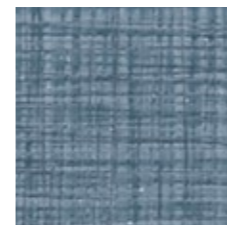
Finesse Green



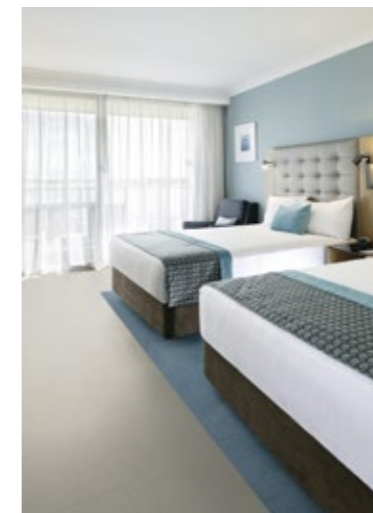
Parker Clear / Finesse Green



Finesse Nature



Finesse Denim



Finesse Nature / Finesse Denim



Swiss Oak Golden / Finesse Nature




Swiss Oak Golden




Finesse Nature

Technical datas

	Creation 40 Zen			Creation 55 Zen			Creation 70 Zen				
Description											
Total Thickness	EN ISO 24346	mm	3.60			4.25			4.35		
Thickness of the wearlayer	EN ISO 24340	mm	0.40			0.55			0.70		
Weight	EN ISO 23997	g/m ²	2675			3570			3670		
Size	EN ISO 24342	mm	245 × 1250	150 × 750	500 × 500	245 × 1250	150 × 750	500 × 500	245 × 1250	150 × 750	500 × 500
Number of planks or tiles per box	-	m ²	14 / 4.29	*	18 / 4.50	11 / 3.37	*	15 / 3.75	11 / 3.37	*	15 / 3.75
Classification											
Norm/Product Specification	-	-	EN ISO 11638			EN ISO 11638			EN ISO 11638		
European Classification	EN ISO 10874	class	32			33-42			34-42		
Fire Rating	EN 13 501-1	class	Bfl-s1			Bfl-s1			Bfl-s1		
Static Electrical Propensity	EN 1815	kV	< 2			< 2			< 2		
Slip Resistance Wet	DIN 51130	class	R10			R10			R10		
Performances											
Wear Resistance	EN 660.2	mm ³	≤ 2.0			≤ 2.0			≤ 2.0		
Wear Group	QB 30	group	T			T			T		
Impact sound insulation	EN ISO 717-2	dB	20			20			20		
Room impact	NFS 31 074	dB	< 65			< 65			< 65		
Dimensional stability (norm)	EN ISO 23999	%	≤ 0.25			≤ 0.25			≤ 0.25		
Dimensional stability (average measured value)	EN ISO 23999	%	≤ 0.05			≤ 0.03			≤ 0.03		
Residual Indentation (norm)	EN ISO 24343-1	mm	≤ 0.20			≤ 0.20			≤ 0.20		
Residual Indentation (average measured value)	EN ISO 24343-1	mm	0.12			0.12			0.12		
Thermal Conductivity	EN ISO 10456	W/(m.K)	0.25			0.25			0.25		
Colour Fastness	EN 20 105-B02	degree	≥ 6			≥ 6			≥ 6		
Chemical Products Resistance	EN ISO 26987	class	OK			OK			OK		
Surface Treatment	-		ProtecShield™			ProtecShield™			ProtecShield™		
Environment / Indoor air quality											
TVOC after 28 days	ISO 16000-6	µg/ m ³	< 10			< 10			< 10		
CE Marking											
CE	EN 14041	-									

* Numbers of tiles /m² box: contact us

 Installation and Maintenance Guidelines, Complementary ranges available on our Gerflor website.
 Rubber leaves indelible stains on vinyl floorings: do not use mats with rubber backing and replace tubular furniture feet with those made of PVC or polyamide.
 Place mats of sufficient length at entrances to reduce outside sources of dirt.

IMPORTANT: The information contained in this document is valid from 01/05/2023 and is subject to change at any time without notice.
 In the context of constantly changing technology, our customers are responsible, prior to any use, for checking with us that this document is the version in force.



We care / We act Our Commitments for a Sustainable future



CARBON FOOTPRINT*

-20 % kg CO₂ equivalent /m² between 2020 and 2025



BIOSOURCED CONTENT**

10 % by 2025



RECYCLED CONTENT

30 % by 2025



ADHESIVE FREE***

35 % d'ici à 2025



ANNUAL VOLUME RECYCLED

60 000 t by 2025



* Scopes 1 and 2 defined in the GHG protocol ** % of activity with biosourced materials *** % of activity - adhesive free solution