



Creation 70 MegaClic

Wood & mineral designs
for heavy traffic

Gerflor[®]

Creation 70 MegaClic

New design collection



**Wood & mineral designs,
available in Tiles & Planks**

Décors bois & minéraux, disponibles en Dalles & Lames
Neue Design-Kollektion, erhältlich als Fliesen & Planken



**Inspired by the latest Interior Design
Trends for Commercial Spaces**

Inspirée des dernières tendances en design intérieur
pour les espaces commerciaux
Inspired by the latest Interior-Design-Trends
für gewerbliche Räume



**Designed to combine with GTI® or
Design Tile and reach perfect harmony**

Conçue pour s'associer en parfaite harmonie
avec GTI® Max ou Design Tile
Entwickelt zur Kombination mit GTI® Max
oder Design Tile für eine perfekte Harmonie

Designed for Comfort & Safety



**Noise reduction vs ceramic
> Acoustic comfort**

Réduction du bruit vs céramique > confort acoustique
Geräuschreduzierung gegenüber Keramik > akustischer
Komfort



R10 > Slip resistance

R10 > Résistance à la glissance
R10 > Rutschhemmung



**Protecshield surface treatment
> easy cleaning**

Traitement de surface Protecshield > nettoyage facile
Protecshield-Oberflächenvergütung > einfache
Reinigung



Interior
Designer



interiordesigner.gerflor.com

Samples



Packaging

Format (mm)	Tile/ plank per box	Sqm per box	Sqm per pallet
Creation 70 Megaclic			
200.5 x 1235.5	6	1.49	80.46
489 x 989	4	1.93	88.78

Full design
concept

with matching
skirtings, profiles & mats

Nordic Oak Clear - Prado Grey

MegaClic System

patented by Gerflor



**Patented double vertical clic specifically
designed for high traffic environments**

Système double clic vertical breveté spécialement
conçu pour les zones à fort trafic
Patentiertes, vertikales Doppel-Klicksystem speziell für
stark frequentierte Bereiche



Rolling traffic compliant* up to 600kg

Résiste au trafic roulant jusqu'à 600 kg
Befahrbar mit einem Hubwagen bis zu 600 kg



Adhesive free installation*

Pose sans colle / Klebstofffreie Verlegung



Renovation over ceramic

Rénovation sur carrelage / Verlegung auf keramischen Fliesen



Easy to replace

Facile à remplacer / Einfach auszutauschen

*For more information, please see Gerflor installation guidelines
Pour plus d'informations, veuillez consulter les recommandations de pose Gerflor
Für weitere Informationen beachten Sie bitte die Gerflor-Verlegeanleitung

we care / we act

our commitments for 2030



Climate

Low CO₂ footprint / EPD available

Faible empreinte CO₂ / EPD disponible

Geringer CO₂-Fußabdruck / EPD verfügbar



Ressources

Recycled content 29% / Mineral & recycled content = 77%

Contenu recyclé 29% / Contenu minéral & recyclé = 77%

Durchschnittlicher Recyclinganteil 29% / mineralischer- & recycelter Inhalt 77%



Circularity

Adhesive free / easy re-cycle (Gerflor Second Life program)

Sans adhésif / facile à recycler (programme Gerflor Seconde Vie)

Ohne Klebstoff / kann im Rahmen des Second Life Programms von Gerflor recycelt werden



Indoor air quality

Best-in-class performance A+ Certified & Floorscore

Meilleure performance du marché Certifié A+ & Floorscore

Beste Marktperformance / A+ & Floorscore zertifiziert



GTI® Max Carbon / Creation 70 MegaClic Albion

Full Design Concept

Do not forget the finishes & tools

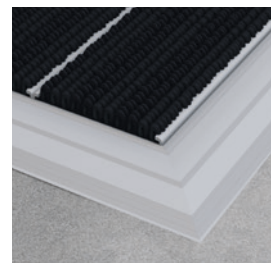
N'oubliez pas les finitions et les outils / Vergessen Sie nicht das Zubehör



Aluminium Ramp
Code : 0505



PVC Ramp
Code : 0500
(colours: Lead, Linen)



Entrance mat
Esplanade 9000
Code : 1700



Anti Bounce Mallet
Code : 5951



Welding rods CR50
Code : H009



Creation 70 MegaClic: Nordic Oak Clear - GTI® Max Merapi

Creation 70 MegaClic



0577 Albion



Design shade variation:
Niveau de contraste du décor
Kontraststärke des Designs

 **Light**  **Medium**  **High**
Léger Moyén Fort
Gering Mittel Hoch



1763 Albion Honey



1762 Albion Beige



Albion Beige



1766 Bodega Chestnut



1767 Bodega Natural



Bodega Natural

Creation 70 MegaClic



0545 Serena

1764 Nordic Oak Clear

1052 Muse Sand

1765 Nordic Oak Natural



0538 Midwest

0357 Portobello

0358 Moon Island

0800 Toasted Wood Roadster



Nordic Oak Clear - Prado Grey

Design shade variation:
Niveau de contraste du décor
Kontraststärke des Designs



Light
Léger
Gering



Medium
Moyen
Mittel



High
Fort
Hoch



1771 Camino Medium Grey



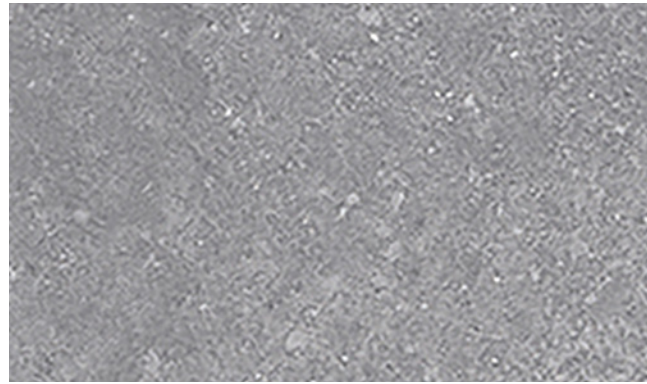
1768 Rapolano Light Beige



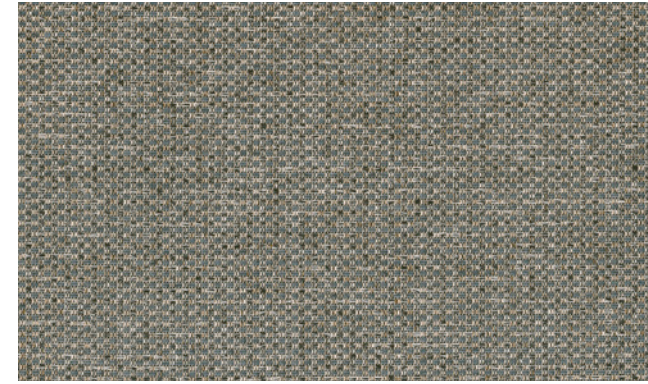
0088 Oxyd Pure



1770 Camino Light Grey



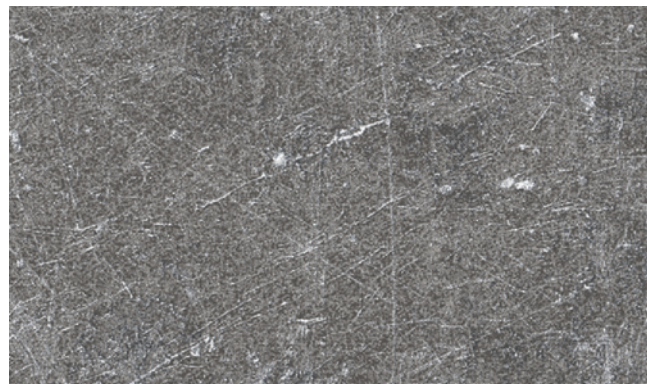
1773 Shady Concrete Grey



1769 Tela Denim



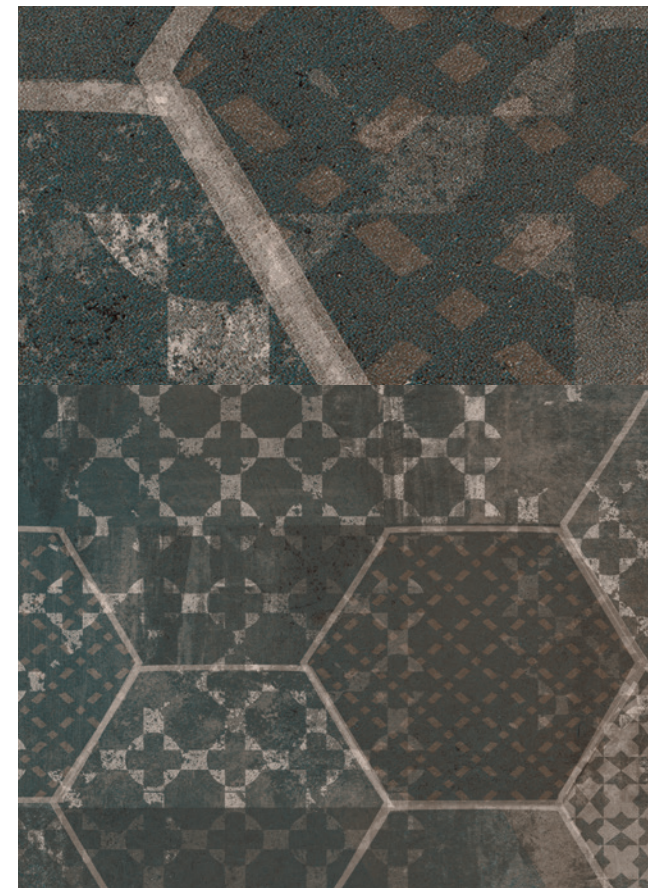
1772 Camino Dark Grey



0085 Dock Grey



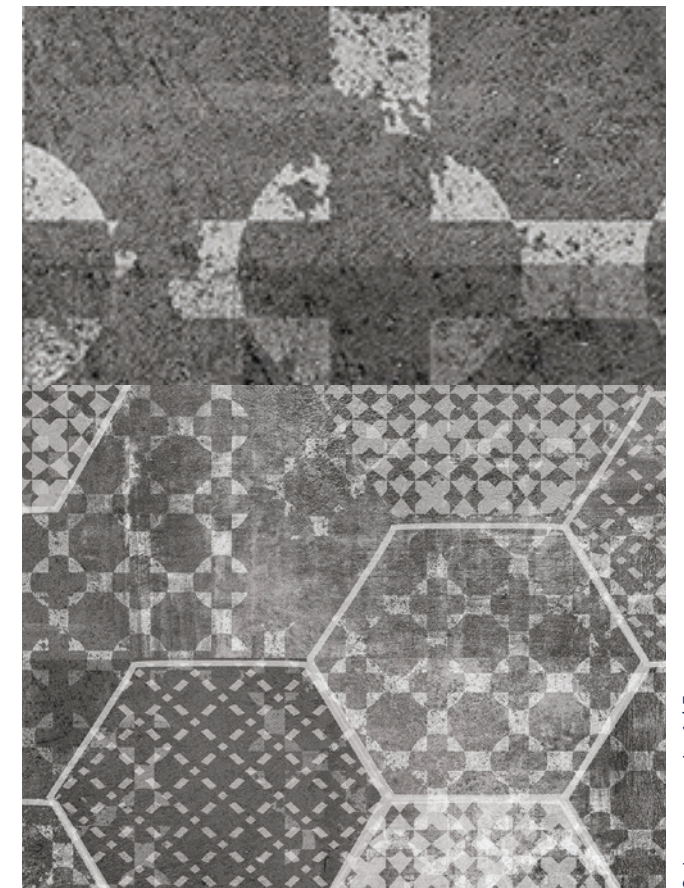
1069 Etna Dark



1064 Prado Green



Color scan scale: 1 / 5



1774 Prado Grey



Color scan scale: 1 / 5



Tela Denim



Z0014649

Creation 70 MegaClic

Description / Beschreibung

Total Thickness / Épaisseur totale / Gesamtdicke	EN ISO 24346	mm	6	
Thickness of the wearlayer / Épaisseur couche d'usure / Dicke der Nuttschicht	EN ISO 24340	mm	0.70	
Weight / Poids / Flächengewicht	EN ISO 23997	g/sqm	9230	
Size / Format / Format Planken/Fliesen				
Number of planks & tiles / sqm per box Nombre de lames / dalles et m ² par boîte / Planken-/Fliesenanzahl pro Karton / m ² pro Karton	ISO 24342	mm	200.5 x 1235.5 6 / 1.49	489 x 989 4 / 1.93

Classification / Klassifizierung

Norm/Product Specification / Norme / Produktnorm	-	-	EN ISO 10582	
European Classification / Classement Européen / Europäische Klassifizierung	EN ISO 10874	Class	34 - 43	
Fire Rating / Classement Feu / Brandverhalten	EN 13 501-1	Class	Bfl-s1	
Static Electrical Propensity / Potentiel de charge / Begehaufladung	EN 1815	kV	< 2	
Slip Resistance Wet / Glissance humide / Rutschhemmung	DIN 51130	Class	R10	

Performances / Technische Eigenschaften

Wear Resistance / Résistance à l'usure / Verschleißverhalten	EN 660.2	mm ³	≤ 2.0	
Wear Group / Groupe d'abrasion / Verschleißgruppe	QB 30	group	T	
Type Binder content / Teneur en agent liant / Bindemittelgehalt	ISO 10582	group	I	
Impact sound insulation / Isolation acoustique bruits de chocs / Trittschallverbesserungsmaß	EN ISO 717-2	dB	5	
Room Impact / Sonorité à la marche / Raumschall	NF S 31074	dB	78	
Dimensional stability (norm) / Stabilité dimensionnelle (norme) / Maßstabilität (Norm)	EN ISO 23999	%	≤ 0.15	
Residual Indentation / Poinçonnement statique rémanent / Resteindruck	EN ISO 24343-1	mm	≤ 0.10	
Castor chair test / Essai de la chaise à roulettes / Stuhlrollenbeanspruchung	ISO 4918	-	OK	
Thermal Conductivity / Conductivité thermique / Wärmeleitfähigkeit	EN ISO 10456	W/(m.K)	0.25	
Colour Fastness / Solidité lumière / Lichtechtheit	EN 20 105 - B02	degree	≥ 6	
Surface Treatment / Traitement de surface / Oberflächenvergütung	-	-	ProtecShield™	
Chemical Products Resistance / Résistance aux produits chimiques / Verhalten gegenüber Chemikalien ⁽¹⁾	EN ISO 26987	-	OK / Sehr gut	


Environment / Environnement / Umwelt

Recycled content (average) / Contenu recyclé (moyen) / Recyclinganteil	-	%	29	
Recyclability / Recyclabilité / Recycelbarkeit	-	%	100	

Health / Santé / Raumluftqualität

TVOC after 28 days / TVOC après 28 jours / TVOC nach 28 Tagen	ISO 16000-6	micrograms/m ³	< 10	
---	-------------	---------------------------	------	--

CE Marking / Marquage CE / CE Kennzeichnung



	EN 14041	-				
--	----------	---	---	---	---	---

IMPORTANT: The information contained in this document is valid from 01/11/2025 and is subject to change at any time without notice. In the context of constantly changing technology, our customers are responsible, prior to any use, for checking with us that this document is the version in force.

Les informations contenues dans ce document sont valables à compter du 01/11/2025 et susceptibles d'être modifiées à tout moment et sans préavis. L'évolution de la technique étant permanente, il appartient à notre clientèle avant toute mise en œuvre, de vérifier auprès de nos services que le présent document est bien celui en vigueur.

Beständig gegenüber nicht färbenden alkoholhaltigen Handdesinfektionsmitteln, Haushaltschemikalien und verdünnten Säuren sowie Laugen bei kurzzeitiger Einwirkung.

We care / we act our commitments for 2030

 climate	 resources	 circularity	 health & well-being	 people
<p>-30% CO₂ scopes 1, 2, 3 in tons eq. CO₂, vs 2019 Science Based Targets⁽¹⁾</p>	<p>75% biobased, mineral and recycled content⁽²⁾</p> <p>30% recycled content⁽³⁾</p>	<p>65 000 tons annual volume recycled⁽⁴⁾</p> <p>45% looselay⁽⁵⁾</p>	<p>100% products better than Indoor Air Quality standards⁽⁶⁾</p> <p>95% sales covered by EPD⁽⁷⁾</p>	<p>30% women⁽⁸⁾</p> <p>40% internal mobility⁽⁹⁾</p> <p>Towards 0 accident⁽¹⁰⁾</p>

More details: 1. Scopes 1, 2 & 3, in absolute value, market-based. Trajectory approved by SBTi (Science Based Targets Initiative). 2. Origin of raw materials for the entire Floor & Wall portfolio, on average, by weight; including 15% virgin salt, a primary element in vinyl manufacturing. Compared to 71% in 2024. 3. Average content in the Floor & Wall vinyl portfolio, by weight. Compared to 21% in 2024. 4. Recycled in our factories and recycling units. Compared to 59 040 tons in 2024. 5. % of Floor activity with non-glued products, easy to remove, easy to re-use. Compared to 40% in 2024. 6. 100% of vinyl and linoleum sold to the building market below 100 micrograms/m³ (TVOC 28 days). 7. % of Floor & Wall activity covered by Environmental Product Declarations (EPD). Compared to 44% in 2024. 8. % women in our global workforce and among our managers. Compared to respectively 26% and 27% in 2024. 9. % job openings filled with internal hires worldwide. Compared to 25% in 2024. 10. Towards 0 accident: Lost time accident per million hours worked: below 3 vs 8,9 in 2024, for Gerflor employees worldwide.

